



DREAM TOWNHOUSE

FOR SALE

TO
625.000,-€

LF0676



Turnkey

Exclusive

PROJECT TERRACED HOUSE

In the heart of Campos, surrounded by natural beauty just a few minutes from the spectacular beach of Es Trenc, is **Son Vanrellet**, a turnkey housing development home concept. This exclusive project combines traditional Mallorcan style with modern features of the highest quality.

A design that exudes authenticity and modern dignity

Each of the 18 homes of **Son Vanrellet** is designed to reflect the essence of the traditional of the villages of Mallorca, with unique facades and spaces that fuse innovation and comfort. The main feature:

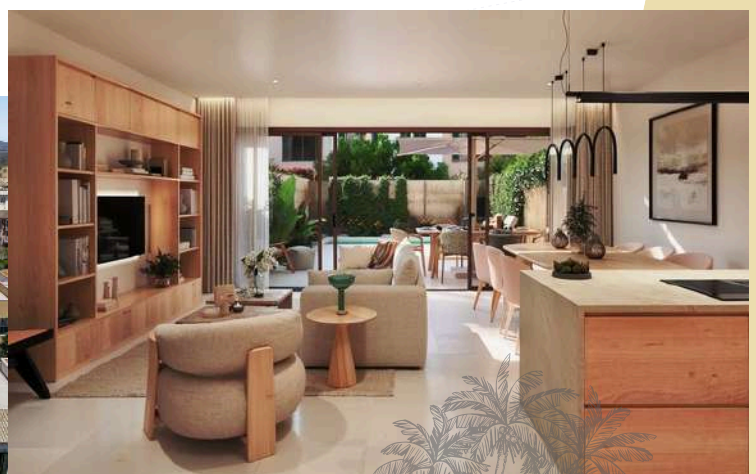
- 3 bedrooms (2 doubles + 1 suite with dressing room).
- 2 full bathrooms + 1 toilet.
- Private 55 m² garden to enjoy the Mediterranean climate.
- Private swimming pool (4.5 x 2.2 m²) with electrolysis system.
- Private garage with pre-installation for electric vehicle chargers.

With a plot of 12 built of 144.7 m², a garden terrace of 200 m², these homes give in every corner.

The ground floor includes a cozy space with designer kitchen equipped with appliances with Bosch, Silestone countertops, Grohe taps and smart air conditioning. In the upper floor, a detail that optimizes the room, a feature of the home.

Sustainability and innovation Son Vanrellet opts for the energy efficiency of a hot water system and a kit that promotes greater savings and a sustainable lifestyle.

in its measure the energy efficiency of aerothermal energy for solar panels that energetic, ensuring and respectful with him



Exclusiv a



Living m2: **144 m2**

Plot m2: **127 m2**



Swimming pool ·

· Garden (55m2)



Electric car charger
(preinstallation) ·

· Terraces



Floor heating ·

· Solar panels





Exclusiv a





Exclusiva





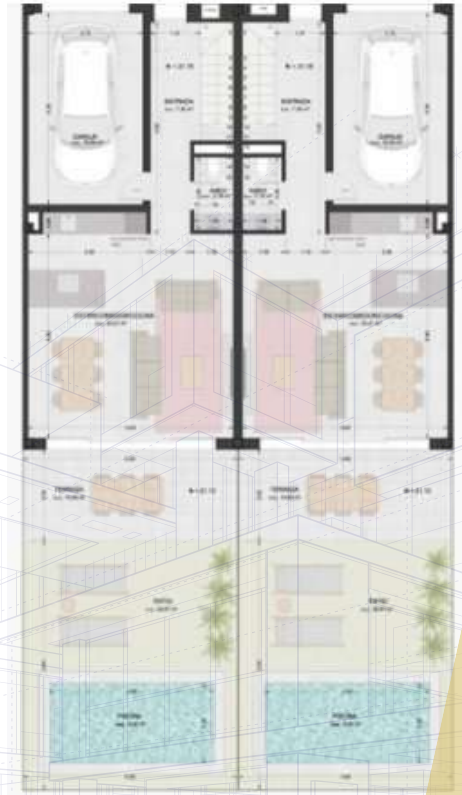
Turnkey

Exclusive

PROJECT TERRACED HOUSE

- **3 BEDROOMS GROUND FLOOR**(2 doubles + 1 suite with dressing room and private bathroom) **2 FULL BATHROOMS + 1 TOILET**
- **FULLY EQUIPPED KITCHEN**
- With quality finishes
- **PRIVATE GARAGE**
- With pre-installation for electric vehicle charger
- **GARDEN AND PRIVATE POOL**To enjoy the Mediterranean climate
- **GROUND FLOOR AND FIRST FLOOR**
- With laundry room on the upper floor

Plant low



EFIENERGY SCIENCE

Installation of a solar panel kit for greater savings

Plant



PLOT OF 12 7 M2
 With a super built of 1 44 m2

GARDEN TERRACE 55 M2

TOTAL SURFACE AREA 200 M2
 Distributed between ground floor, first floor and garden*



Exclusiv a





Exclusiv a





Exclusiv a





Exclusiv a

FIELDS



Campos, the perfect place to enjoy Mallorca

Situated in a strategic and charming location, the municipality of Campos is one of the most attractive destinations in the southeast of Mallorca. Its proximity to paradisiacal beaches, closeness to key points of the island and its authentic character make it an ideal place both to live and to enjoy an unforgettable holiday.

Paradise beaches

Campos is the perfect location for those looking to enjoy the best beaches in Mallorca. Just 15 minutes (12 km) away is Es Trenc, a white sand beach with crystal-clear waters, famous for its natural beauty. Also very close is the Arenal de Sa Ràpita, just 10 km and 10 minutes away by car, an ideal place to relax and enjoy the Mediterranean. If you are looking for something different, Colonia de Sant Jordi, just 14 km (16 minutes) away, offers a lively and charming coastal atmosphere.

In addition, just 15 minutes away (14.5 km), Campos is perfectly connected to Santanyí, a picturesque town known for its traditional market, restaurants and rich cultural offering. Golf lovers will also find the Marriott Golf Club Son Antem, 18 minutes away (19 km), the perfect place to practice their favourite sport.

Connected to the entire island

Campos is located just 33km from Palma de Mallorca Airport, which translates into a comfortable journey time of just 24 minutes. Getting to the capital, Palma, is just as easy, being only 38km away, around 30 minutes by car. This makes Campos an easy point of access, whether you want to explore the island or to be close to services and international connections.





Exclusiv a

FIELDS



AIRPORT 33 km · 24 min.

PALMA 38 km · 30 min.

ES TRENC 12 km · 15 min.

ARENAL DE SA RÀPITA 10 km · 10 min.

SANTANYÍ 14.5 km · 15 min.

MARRIOTT GOLF CLUB SON ANTEM 19 km · 18 min.

SON LLÀTZER HOSPITAL 37.5 km · 30 min.

COLONIA DE SANT JORDI 14 km · 16 min.



Lucas Froese
REAL ESTATE

www.lucasfroeserealestate.com



Volantina Point
Website



Lucas Froese
REAL ESTATE

www.lucasfroeserealestate.com

+ 34 971 09 26 34

info@lucasfroeserealestate.com